



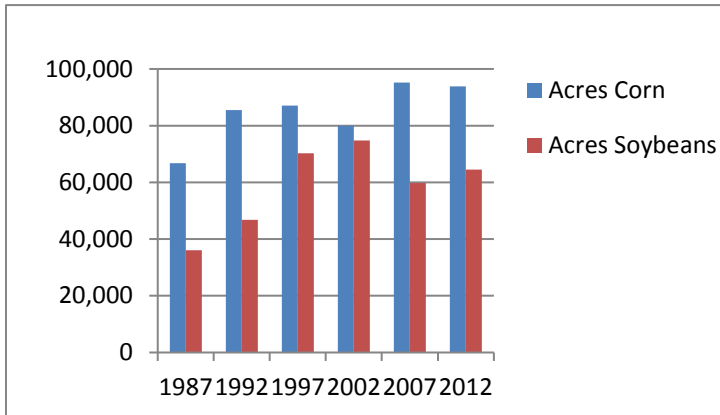
Agriculture

A look at historic Rice County agricultural crops.

Crops

One of the greatest defining characteristics of Rice County is the agricultural base that provides large economic benefits to the county in addition to the bountiful harvests and scenery associated with farming. Historically, agriculture has been asked to provide not only food, but to preserve open space for recreation and natural habitat, to practice good stewardship, and to meet the demands of a changing economy.

Rice County has experienced a fluctuation in acres used in production of the main crops grown. This could be attributed to broad factors including: land value, farming practices & crop market.



In the last 30 years, corn acres and soybean acres have increased, with the exception of a drop of soybean acres in 2007.

Water quality continues to be affected by all types of land uses. The use of conservation and returning low areas to wetlands is attractive to some land owners.

Small grain (wheat, oats and hay/alfalfa) acres have decreased while there has been an increase in acres enrolled in government subsidized conservation programs.

