



## COVID-19 Vaccinations Available for Those 12 Years and Older

### Please Roll Up Your Sleeves and Get Vaccinated if You Have Not Already Done So

Rice County Public Health and local health-care providers and pharmacies are continuing COVID-19 vaccination efforts throughout the summer to protect our community. Vaccination is the safest way to build immunity.

Vaccinations are available for those 12 years and older. Rice County Public Health hosts numerous COVID-19 vaccination clinics throughout the county. Please check our website, [www.co.rice.mn.us/528/GET-VACCINATED-COVID-19](http://www.co.rice.mn.us/528/GET-VACCINATED-COVID-19), for information on upcoming clinic times, locations, and vac-

cines available. Registration links to schedule an appointment can also be found at that website.

Pre-registration online is recommended, but walk-ins are welcome. If you need help registering, please call 507-332-5902 or 507-332-5928 and we will assist you.

For those who are homebound and unable to get to a vaccination clinic, Rice County Public Health staff are available to make home

[continued on page 2](#)

## INSIDE

- 2** Visit Us At The Fair!  
Emerald Ash Borer
- 3** Rice County Fair  
Information
- 4** Recycling Tips  
Public Health Graphics  
Backyard Composting
- 5** Sheriff's Office –  
New Jail/LEC Approved
- 6** Upcoming Local Events  
Land Notification System  
Passports/Licenses
- 7** Attorney's Office  
County Profile
- 8** Rice County  
Standing Meetings  
How to Contact Your  
Rice County Officials

## New Transportation Van For Veterans' Services

The mission of the Veterans' Services Office is to provide assistance and support to county veterans and their dependents in obtaining veteran benefits through county, state, and federal programs, and to act as an advocate on their behalf or direct them to other authorized agencies or providers as their needs dictate.

One of the services provided is scheduling transportation for veterans to the Minneapolis VA Medical Center. Five days a week, Rice County provides transportation to county veterans who have a scheduled appointment at the Minneapolis VA Medical Center.

This spring, the Veterans' Services Office purchased a 2021 Toyota Sienna Hybrid LE AWD. This van has ultra-low emissions and a star safety system, including enhanced vehicle stability control, traction control, anti-lock brake system, and brake assist and smart stop technology. We are grateful that our veterans will be able to ride comfortably and safely.

Transportation pickup is based on residential location. In most cases, if the veteran lives within the city limits of Northfield or Faribault, we will pick up at the veteran's home. We will also pick up at central locations such as the Government Services Building and Flying J for those veterans who live out-



side the Northfield and Faribault city limits. Appointments should be scheduled between 8:00 a.m. and 12:30 p.m., if possible, for the convenience of other riders and the van drivers.

To request this service, contact the Rice County Veterans' Services Office at the Government Services Building to be entered into the appointment log. Call the office at 507-332-6117 between 8:00 a.m. and 4:30 p.m., Monday through Friday. Rides are scheduled on a first-come, first-served basis.

[www.co.rice.mn.us](http://www.co.rice.mn.us)

- Dundas • Faribault
- Lonsdale • Morristown
- Nerstrand • Northfield
- Warsaw • Webster

## Be Aware

### Quarantine for Emerald Ash Borer in Rice County

In 2020, Rice County was added to the list of counties under quarantine for the emerald ash borer. The quarantine is designed to prevent or slow the spread of emerald ash borer into non-infested areas. Neighboring counties of Steele, Dodge, Goodhue, Dakota, and Scott are also under emerald ash borer quarantines.

The emerald ash borer is a beetle native to Asia, which was first discovered in the United States in 2002 near Detroit, Michigan. It is believed that it came to the U.S. in infested wooden packing materials from Asia. Since 2002, it has been spreading rapidly in the U.S., and was first identified in Minnesota in 2009. As of 2018 it has been found in 35 states. The emerald ash borer is a serious invasive tree pest and kills ash trees.

In March of 2020, emerald ash borer was identified in Rice County, and consequently the county was placed under a quarantine to help slow the spread to other areas in Minnesota. The quarantine restricts the movement of ash materials and hardwood firewood.

For more information on the quarantine and current regulations, please check the following websites: [www.mda.state.mn.us/plants-insects/emerald-ash-borer-quarantine](http://www.mda.state.mn.us/plants-insects/emerald-ash-borer-quarantine) and [www.mda.state.mn.us/questions-answers-about-eab-quarantine-compliance-agreements](http://www.mda.state.mn.us/questions-answers-about-eab-quarantine-compliance-agreements).

Additional information about emerald ash borer and some best management practices for homeowners is available at [www.mda.state.mn.us/eab-info-homeowners](http://www.mda.state.mn.us/eab-info-homeowners).

## Visit us at the 2021 Rice County Fair!

Join us at this year's Rice County Fair, where these county departments will be on hand.

**Rice County Public Health** will host a booth in the Commercial Exhibit Building. Stop by to learn more about Public Health services or to let your child pick up some free "kid friendly" items. We will have themed days and health education materials about dental health, tobacco cessation, mental health and wellness, family health, and more.

During the fair, Public Health will have a **lactation space** for the convenience of breastfeeding women, located in the Straight River Room of the Commercial Exhibit Building. Women are welcome to feed their babies anywhere on the fairgrounds, however, this is a quiet space where mothers can go to nurse, feed, change, or rest with their babies. The lactation space is available during regular building hours throughout the duration of the fair.

Public Health will also host a **COVID-19 vaccination clinic** in the Straight River Room on Thursday, July 22, 3:30–6:30 p.m. Both Pfizer and J&J vaccines will be available.

**Environmental Services** will have a booth in the Commercial Exhibit Building.

**The Sheriff's Office** will be present in their Mobile Incident Command bus. Staff will be available to answer questions and provide public safety and first aid to those in need. Stop by to get information about how to prevent distracted driving, including hands-free cell phone use.

**Rice County Safe Roads Coalition** will be at the fair with traffic safety information. Visit them at the Sheriff's Command Center, across from the 4-H Building, on Friday, July 23, 6–9 p.m. This year, staff will have a seat belt convincer available which demonstrates the need to **BUCKLE UP EVERY TIME!** Operate it and talk with law enforcement and EMS about the dangers of not wearing a safety belt. (Must be 14 years or older to use the seat belt convincer.) There will be free root beer for all participants.

In 2020 in Rice County, eight out of 10 fatalities were unbelted.

**PLEASE BUCKLE UP!**

## COVID-19 Vaccinations Available Locally

*continued from page 1*

visits for COVID-19 vaccination, Just give us a call and we will make arrangements for this service.

As of June 29, 65% of Minnesotans 12 years and older have received one dose of COVID-19 vaccine. In Rice County, that percentage is a bit lower at 61.8%. Now is the time, Rice County residents, to "roll up your sleeves" and get vaccinated if you haven't already done so!

### Thank You to Our Rice County Public Health Volunteers!

Rice County Public Health would like to thank the following health professionals who graciously volunteered their time to assist Public Health staff at COVID-19 vaccination clinics:

- Dr. Reed Johnson
- Kathy Westlund, RN
- Kristin Stets, RN
- Dr. Kate Gruenwald
- Dr. Dick Huston

**Thank you very much for your help. It is greatly appreciated!**

### Who's Getting Vaccinated in Rice County

Data reported as of 6/29/21

Age group	People with at least one vaccine dose	People with completed vaccine series
12–15	1,249	1,022
16–17	878	794
18–49	14,538	13,594
50–64	9,062	8,749
65+	9,281	9,114
Unknown/missing	1	–
<b>Total</b>	<b>35,008</b>	<b>33,273</b>
	<b>61.8%</b>	<b>58.7%</b>



## 2021 Rice County Fair – Entertainment Highlights

### Grandstand

- Wed., July 21 Auto Cross – 6 p.m.
- Thurs., July 22 Enduro Auto Races – 6 p.m.
- Fri., July 23 Barnes PRCA Rodeo – 7 p.m.
- Sat., July 24 CMP Truck & Tractor Pull – 7 p.m.
- Sun., July 25 Kids Power Wheels – 4 p.m.  
Demolition Derby (follows Power Wheels)



### Beer Garden Entertainment (Live Music: 8 p.m.–midnight; no cover charge)

- Thurs., July 22 Fender Bender
- Fri., July 23 Old Country Boys
- Sat., July 24 Mister Peabody

### Cannon Stage (Free Entertainment)

- Wed., July 21 Brodini Family Comedy/Magic Show – 4 p.m. and 7 p.m.  
Tuey the Juggler – 5:30 p.m. and 8 p.m.
- Thurs., July 22 Electric Fusion – 10 a.m., 3 p.m., 7 p.m. and 9 p.m.  
Tuey the Juggler – 2 p.m., 6 p.m. and 8 p.m.
- Fri., July 23 Electric Fusion – Noon and 8 p.m.  
Kids Day Program – 12:30 p.m.  
Tuey the Juggler – 1:30 p.m., 3 p.m. and 7 p.m.
- Sat., July 24 Brodini Family Comedy/Magic Show – 4 p.m. and 6 p.m.  
Electric Fusion – 11 a.m.  
Tuey the Juggler – 1 p.m. and 8 p.m.
- Sun., July 25 Brodini Family Comedy/Magic Show – 6 p.m.  
Electric Fusion – Noon  
Open Mike with Electric Fusion – 1 p.m.  
Brodini Family Comedy/Magic Show – 3 p.m.

### Sellner Stage (Free Entertainment)

- Wed., July 21 Tuey the Juggler – 3 p.m.  
Jolly P's – 6:30 p.m.  
Brodini Family Comedy/Magic Show – 9 p.m.
- Thurs., July 22 Brodini Family Comedy/Magic Show – 3:30 p.m.  
The Whitesidewalls – 7–10 p.m.
- Fri., July 23 Charlie Sticha Band – 1–5 p.m.  
Electric Fusion – 5:30 p.m.  
Smoking Barrels – 7–9 p.m.
- Sat., July 24 Brodini Family Comedy/Magic Show – 11:30 a.m. and 2 p.m.  
"No Time For Fame" – 1–4 p.m.  
Tuey the Juggler – 3:30 p.m. and 5:30 p.m.  
La Raza de Mexico – 8:30 p.m.–12 a.m.
- Sun., July 25 Non-Denominational Church Service – 10 a.m.  
"Switched at Birth" Gospel Band – 12–3 p.m.  
4-H Fashion Review – 3 p.m.  
4-H Parade of Champions – 4 p.m.  
Fairgrounds Closed – 8 p.m.

### Ride Specials & Schedule

Wed., July 21 – Opens at 1 p.m.

Arm Bands – \$30 per person  
(unlimited rides 1 p.m.–closing)

Thurs., July 22 – Opens at Noon

Arm Bands – \$30 per person  
(unlimited rides 1 p.m.–closing)

Fri., July 23 – Opens at Noon – Kids Day

Arm Bands – \$25 per person before 4 p.m.  
(unlimited rides noon–closing)

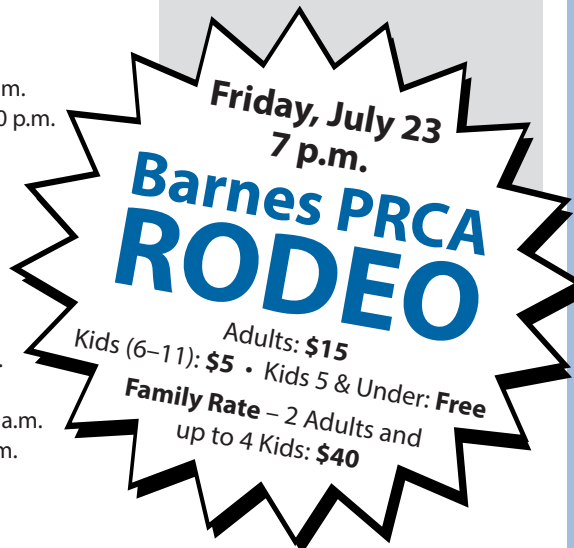
Arm Bands – \$30 per person after 4 p.m.  
(unlimited rides 4 p.m.–closing)

Sat., July 24 – Opens at Noon

Arm Bands – \$30 per person  
(unlimited rides 3 p.m.–closing)

Sun., July 25 – Opens at 1 p.m.

Arm Bands – \$30 per person  
(unlimited rides 1–8 p.m.)



## Enjoy the 2021 Rice County Fair

Welcome to the Rice County Fair – some of the most exciting days of the summer! Every year, members of the Fair Board work hard to bring events and exhibits to the fair.

You will be able to see more than 100 commercial exhibits, lots of animals, and exciting entertainment all week long. This list is a preview of some of the great entertainment on tap this year. Be sure to visit our website and check the full schedule published just prior to the fair.

**Admission to the Rice County Fair is free!** Parking on the grounds has increased to \$7 a day, but a weekly parking pass is available for \$20. (You can purchase a pass at the Fair Office or at the gate.)

**Remember: Pets, bikes, skateboards, inline skates and scooters are NOT allowed on the fairgrounds.** Please help ensure the safety of all our visitors.

### Smoking Policy

The Rice County Fairgrounds are smoke free except in designated areas. **This includes regular cigarettes and e-cigs.**

There are designated areas for tobacco use on the grounds. These areas are noted in the premium book.

### Dog Policy

No dogs are allowed on the fairgrounds during the week of the Rice County Fair. (Service dogs or service dogs in training are allowed.) This is for the safety of all visitors.

## Did You Know?

### Recycling Tips

**Please recycle responsibly!** It is important to place only the correct items in your single-sort recycling cart.

Do not bag your recyclables; items must remain loose within your cart.

**These items do not belong in your recycling cart:**



Do Not Bag Recyclables  
No Garbage



No Plastic Bags or  
Plastic Wrap  
(return to retail stores)



No Food or Liquid  
(empty all containers)



No Tangles  
(no hoses, wires,  
chains, or electronics)



No Sharps



No Batteries  
No Electronics

If you are unsure of how to correctly dispose of an item, visit our **Waste Wizard** tool at [www.co.rice.mn.us/207/Solid-Waste-Facility](http://www.co.rice.mn.us/207/Solid-Waste-Facility).

**RECYCLE LOOSE!  
– NO BAGS –**

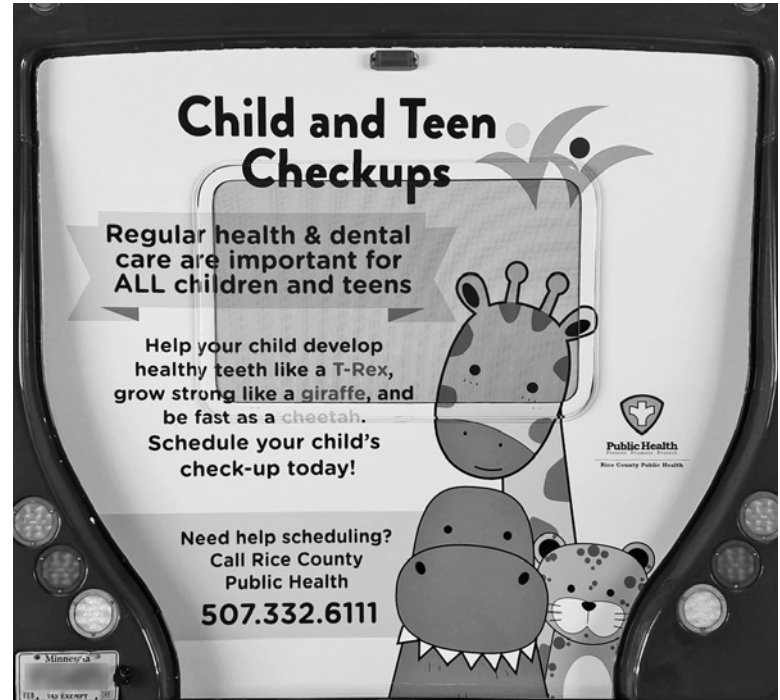


## Public Health Graphics Promote Preventative Care

Rice County Public Health is partnering with Hiawathaland Transit to help share our message (and our new kid-friendly mascots) about the importance of healthcare, dental care, and immunizations for all children and teens.

Preventative care is one of the best things you can do to keep you and your family healthy. If you delayed preventative care during the pandemic, now is the time to schedule those appointments.

Watch for our colorful new graphics on the tail-wrap of Hiawathaland Transit. Then remember to schedule a checkup!



## Backyard Composting

Backyard composting is the simple method of managing organic waste at home. It reduces yard, garden, and food waste and the amount of waste entering the landfill.

A compost pile consists of green waste, brown waste, and water. Green waste includes grass clippings, vegetable waste, fruit scraps, and coffee grounds. Brown waste includes dead leaves, branches, and twigs. A properly managed compost bin will not attract pests or smell bad.

### How to Start Composting

Typically, compost piles are located outdoors, but there are options for indoor composting. You'll need a bin, which can either be commercially purchased or inexpensively constructed with basic carpentry skills.

Once the bin is established, start the compost process with 50% green and 50% brown waste. Cut the materials down to no larger than 1 inch. Mix and add water every 7–10 days. Your compost will be ready to use when it is dark brown, crumbly, and smells like fresh-turned soil. This usually occurs between 2 months and 2 years, depending on the size of the pile.

You'll get the best results if you use the right mix of ingredients to make your compost. While many materials can be composted, there are some items that you should keep out

of your compost pile to minimize odors and keep your pile from attracting scavengers like dogs and raccoons. Since compost is generally used for a soil amendment, you want to keep it free of plant diseases and unhealthy bacteria. This is a short list of items to avoid:

- Food with meat, dairy, or oils
- Pet feces (dog, cat, or bird)
- Diseased plants
- Weeds gone to seed
- Ash from charcoal or coal

Visit the Rice County Solid Waste Facility at [www.co.rice.mn.us/226/Yard-Waste](http://www.co.rice.mn.us/226/Yard-Waste) for information about composting and yard waste.

For additional information about the process of composting, how to create your home composting site, lists of compostable waste products and items to avoid, or just to learn more, visit and explore the following websites:

- **Minnesota Composting Council**, [www.mncompostingcouncil.org/backyard-composting.html](http://www.mncompostingcouncil.org/backyard-composting.html)
- **Minnesota Pollution Control Agency**, [www.pca.state.mn.us/waste/composting-your-backyard](http://www.pca.state.mn.us/waste/composting-your-backyard)
- **University of Minnesota Extension**, [www.extension.umn.edu/managing-soil-and-nutrients/composting-home-gardens#composting-structures-882310](http://www.extension.umn.edu/managing-soil-and-nutrients/composting-home-gardens#composting-structures-882310)

# Sheriff's Office Update – New Jail and Law Enforcement Center Approved

By Sheriff Troy Dunn

Happy summer, everyone! It feels great to almost be back to the “old normal.” I hope you've been able to deal with the modifications and changes to almost everything we do. I know this caused a great deal of stress with COVID-19 in so many ways. We learned things can still work by using resources such as Zoom, FaceTime, and other technology, but nothing beats a face-to-face meeting, and to be able to shake hands and hug again is welcoming. Please continue to do your part to keep yourself, your family, and friends healthy by taking common sense precautions such as staying home when you're not feeling well and washing your hands.

I want to share with you what's been happening during the last 15 months besides COVID. Rice County embarked on its sixth Jail Facility Study. This transpired after the MN Department of Corrections (DOC) did an annual inspection of our two facilities. After the inspection of our downtown “main jail,” the recommendation was that Rice County be classified as a 90-day facility. That means anyone in our jail longer than 90 days would have to be transported to another facility for the remainder of incarceration.

Evaluating what this would look like, if our average daily population were to remain the same as 2019, Rice County would spend \$500,000–\$750,000 for out-of-county incarceration. In early 2020, we had over 60 people incarcerated. If the jail population stays at that number, it could reach \$1 million. This would also increase our risk and liability by having to transport individuals to and from court hearings, medical appointments, and so on.

So the Rice County Board of Commissioners approved another study. Two county commissioners, the county attorney, the county administrator, the buildings and maintenance director, along with our chief deputy, jail administrator, assistant jail administrator, and I started the journey. We were tasked with exploring a few options – a new jail, a new jail/LEC (Law Enforcement Center) at our downtown location, and at our Annex location on Hwy 60.

A few months into the process, we expanded looking into a new jail and/or jail/LEC on green space. The prices ranged from about \$46 million for the new jail/

LEC at the Annex location, \$56 million for a new jail/LEC on green space, and nearly \$59 million to build downtown and renovate the old jail/LEC.

Upon sharing this information with the full Board, we were asked to go back and explore other options. Those options included a partnership with Steele County for a joint jail at their current location in Owatonna; building only a new jail and renovating the old jail space for expansion of the Sheriff's Office; and a hybrid of keeping our current jail for 90-day incarcerations and housing the “over 90 days” at Steele County.

After extensive discussions and exploration of the now six options, the decision was made to proceed with new jail/LEC on green space. I want to share why our Facility Study Committee recommended this option and the majority of the Board chose this option.

Our current main jail and LEC were built in 1972 to serve a life span estimated at 25–30 years. Next year it will be 50 years old. We can hold 36 inmates in our downtown facility and 35 at our Annex location. Our main jail can house male and female inmates with minimum, medium, maximum, special housing, and isolation classifications. The main jail has four maximum cells, six medium beds, 18 minimum beds, seven special housing, and one isolation cell. Our Annex location can only house minimum classification male inmates and would be similar to a dorm style or a military barracks setting.

Over the years, we've seen our inmate classification change. Years ago we had many more people who classified minimum and had employment they could attend through the Jail Work Release program. Today, we are seeing a greater number of medium, maximum, and special housing classifications with mental health and chemical dependency diagnoses. To meet DOC guidelines, we cannot just move people around to vacant areas. Remember, our current jail was built to meet our needs in the 1970s–2000s. Our population has grown nearly 20,000 people since that time.

In the 1980s when I started, we had three programs for people who were incarcerated at the jail – AA, NA, and Chapel. Today, we have over 30 programs available, but are unable to provide all of them due to the lack of programming and recreational

space. Our needs have changed. We want to make the most of an individual's time when incarcerated so they are able to deal with their issues and challenges they face on the street. We want to teach them life skills so they are able to control anger and emotions; become a better parent, spouse, or resident in our communities; learn how to prioritize things in life; know how to cope with mental illness and not self-medicate; and gain pro-social skills for their well-being. We don't want the jail to be a revolving door with the same visitors and tenants. We want them to be a successful part of their families and the community. Our current facilities do not make those goals attainable.

The Sheriff's Office has grown as well. We have no additional offices for our investigators, sergeants, or patrol staff. We are using old storage rooms as offices, and our evidence area has outgrown its space. Our meeting rooms are shared with Community Corrections/Probation and are used for their programming and staff meetings. In order for us to hold training and mandatory staff meetings, we have to use rooms at the Government Center, the Armed Services Center, the Annex, and other community structures. We have specialty items such as water patrol boats, ATVs, dive team equipment, and ERU vehicles all stored at the Annex because we don't have room at our main LEC. K9 training is moved to various locations, as we don't have a dedicated K9 training field/facility.

A new facility will allow us to be co-located with the jail and have all of our jail tenants under one roof, instead of two buildings. Being located within our own county will make for a shorter and hopefully safer transport to the courthouse, clinics, or other appointments. Our new facility is not being built as a grand castle, but a safe and secure structure to meet our public safety needs of today and the next 30 years.

I hope this helps everyone better understand why the decision was made to proceed with a new facility. Once it is occupied, we will repurpose the existing buildings to continue to provide great quality service to our county.

I hope to see many of you out and about at different community functions, celebrations, and fairs this summer.

Stay safe and healthy!

## Things To Do

### Upcoming Local Events

After more than a year of COVID restrictions and event cancellations, it's exciting to now have celebrations to look forward to and attend. Here are some upcoming events to enjoy in nearby areas.

#### Faribault

July 21–25	Rice County Fair
Aug. 11–15	Blue Collar Festival (including the Pet Parade)
Aug. 13	Downtown Car Cruises
Aug. 20	Downtown Car Cruises
Sept. 16	Taste of Faribault
Sept. 17	Downtown Car Cruises
Oct. 2	Fall Festival and Chili Cook-Off

#### Northfield

July 22	Crazy Daze
Aug. 25–29	Bridge Chamber Music Festival
Sept. 8–12	Defeat of Jesse James Days

#### Lonsdale

Aug. 14	Lonsdale Community Days
---------	-------------------------

#### Montgomery

July 24	Kolacky Days
---------	--------------

#### Morristown

Aug. 7	City Wide Garage Sale
--------	-----------------------

#### Farmington

Aug. 9–15	Dakota County Fair
-----------	--------------------

Be sure to check local online resources and websites for details or possible changes to dates and times for these and other celebrations and events.

## Recorder's Office – Land Notification System

The Rice County Recorder's Office has implemented a new website called Land Notification, which gives residents the ability to monitor their personal name or business name for real estate activity. This free service for Rice County citizens allows individuals to create one or more alerts that are triggered when real estate records are recorded with the Recorder's Office. This helps property owners prevent fraud by giving information about documents that are being recorded against their name, business, or property. This system allows potential problems to be caught early, protecting your most valuable asset.

### What is property fraud and how often does it happen?

Property fraud is when someone illegally uses your name on records related to your property for financial gain or acquisition of your assets. Mortgage and real estate fraud does occur and is a growing crime in our society.

### How does this work?

Once you have signed up for Land Notification, it will search from that day forward. Each time there is recording activity on a specific property or name, an email is generated, notifying the individual of this activity. You can unsubscribe at any time.

### Will I get unwanted emails?

You will only be contacted when a record with your name is recorded on an official document.

### How do I sign up?

Visit the Recorder's Office website at [www.co.rice.mn.us/300/Recorders-Office](http://www.co.rice.mn.us/300/Recorders-Office), look for the link to Land Notification Overview, enter your personal email address and your personal or business name, and submit. You must have a Google account in order for this to work.

**Note:** Not all documents are connected to parcel identification numbers.

## Recorder's Office – Passports and Marriage Licenses

Applications for passports are now being taken by appointment only. Please call the Rice County Recorder's Office at 507-332-6114 to schedule. Processing times are 9:00 a.m.–3:00 p.m., and all applicants must appear in person.

**Remember:** Never destroy or mutilate a federal passport. It is federal proof that you are a citizen of the United States.

### Passport Requirements

- Applications can be downloaded from our website, [www.co.rice.mn.us/316/Passport-Information](http://www.co.rice.mn.us/316/Passport-Information), or [www.travel.state.gov](http://www.travel.state.gov) and should be printed on one side of the page only. Before you arrive, make sure that your passport application has been completed in **black ink**. **DO NOT** sign the application.
- A certified birth certificate is required (which can be obtained from the Recorder's Office for a \$26 fee if the applicant was born in Minnesota) or a U.S. Naturalization document. A certified copy has the seal or stamp of the official issuing authority.
- A passport photo is required (which can be taken at the Recorder's Office for a \$15 fee).
- A valid I.D. and a photocopy of the valid I.D. must be presented at the time of

application. (The photocopy must be on plain white, 8.5" x 11" standard paper stock, showing the front and back of your I.D. The photocopy must contain images only on one side of each page submitted.)

- The application fee is required for each individual application, payable by check or money order to U.S. Department of State.
- The execution fee can be paid by cash, check, or money order, payable to Rice County Recorder.

### Passport Cards

A passport card will facilitate entry and expedite document processing at U.S. land and sea ports of entry when arriving from Canada, Mexico, the Caribbean, and Bermuda. A passport card cannot be used for international travel.

Passport books and cards are alternatives to a state-issued Real I.D. You may apply for a passport book and card at the same time and pay one execution fee.

### Marriage Licenses

Marriage license applications are accepted in person only, and must be applied for by both applicants at the Recorder's Office in the Rice County Government Services Building. For detailed requirements, visit [www.co.rice.mn.us/305/Marriage-License-Applications](http://www.co.rice.mn.us/305/Marriage-License-Applications).

# The Vision, Mission, and Goals of the Rice County Attorney's Office

By John Fossum, Rice County Attorney

The last 18 months have provided an opportunity to pause and reflect on what the criminal justice system should pursue, and what our function in it needs to be. As part of this process, on June 1, 2021, we introduced a new vision statement for the Rice County Attorney's Office:

**Foster a safer, stronger community by seeking justice with integrity, fairness, and professionalism, while providing the highest quality legal work for Rice County Government.**

This vision recognizes that this office functions as legal counsel for the county as a whole. As general counsel for the county, I deal with civil litigation, codification of county ordinances, and the legal support for all divisions of the county. The work of the office that gets the most attention is the prosecution, particularly of felonies, but we also assist in the collection of child support, pursue the child protection goals of the legislature and social services, and seek recovery of funds owed to social services and other agencies. Each of these obligations has their own vision of justice to achieve, and we hope using our vision statement will aid us in seeking that justice.

In order to pursue our vision we have adopted the following office values:

- **Integrity:** We are honest. We do the right thing. We practice law ethically.
- **Fairness:** Our role is not simply to convict, but to ensure that everyone involved in a criminal case is treated fairly, including all victims and defendants.
- **Professionalism:** We treat everyone with dignity and respect and provide excellent representation in our criminal and civil work.
- **Respect:** We welcome diverse people, ideas, thoughts, and differences of opinions.
- **Positivity:** We encourage our peers and coworkers. We support them and provide productive feedback to create and maintain a positive working environment.

- **Responsibility:** We honor our obligations of fairness and responsibility to provide excellent service for the good of the community.

Finally, to help achieve our mission and live up to our values, we have adopted the following goals:

1. **Attract and retain the best professionals** by creating a culture of integrity, accountability, and respect where everyone can achieve exceptional performance.
2. **Support** victims, witnesses, and their families by advocating for their rights and holding offenders accountable.
3. **Explore innovative restorative justice solutions** so the criminal justice system reflects the values of Rice County.
4. **Build positive and collaborative relationships** with key stakeholders in a manner that maintains our prosecutorial independence.
5. **Ensure conviction integrity** through each stage of the criminal process from charging through case disposition.
6. **Provide high-quality legal services** for civil and non-criminal cases within the statutory responsibilities for the office.
7. **Educate and engage the community** on the criminal justice system by providing accurate and reliable information in the most transparent manner within our legal and ethical responsibilities.

Over the years that I have been the county attorney, I have heard many people describe this position as being powerful. I have never viewed myself as having power, rather, I have obligations. I have an obligation of fairness and a duty to seek justice. In prosecution that includes fairness to the accused, to the victim, and justice for society as a whole. It does not mean always seeking maximum punishment, nor does it mean never seeking maximum punishment. Justice is an ideal and a goal that we seek, but in my office we will try not to lose sight of the goals of the community we are seeking to protect.

## County Profile



**Jim Purfeerst**  
District 1 Commissioner

In November, Jim Purfeerst was elected as Rice County Commissioner for District 1. Commissioners serve as key policy makers, overseeing the operation and administration of the county. They meet each week and serve on several advisory boards or commissions that provide direct and indirect county services.

Purfeerst says, "I enjoy representing the residents of Rice County and working with others to improve the county. Although we may not always agree on topics, I believe the Board of Commissioners is progressive and has mutual respect for each other. I look forward to continuing efforts the county has adopted to streamline department efficiencies, upgrade our transportation system, and promote healthy soils and clean water which we all can enjoy."

A graduate of Faribault High School and South Central College Farm Business Management program, Purfeerst is a lifelong resident of Richland Township. A fifth-generation farmer, he is involved in a family farm operation raising corn and soybeans, along with an Angus cow/calf operation. The farm was homesteaded in 1857.

Purfeerst and his wife, Deb, have three children, Misty, Mark (and Jamie), Matt (and Alyssa), and five grandchildren. He enjoys traveling, snow and water skiing, motorcycling, and spending time with his grandkids.

**CLEAN. DRAIN. DRY.**  
**STOP INVASIVE SPECIES**

[www.CleanDrainDry.org](http://www.CleanDrainDry.org)



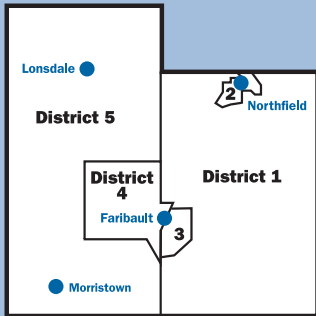


# Rice County Report

Rice County Government Services Building  
320 Third Street NW  
Faribault, MN 55021

PRST STD  
U.S. POSTAGE  
PAID  
FARIBAULT, MN  
PERMIT NO. 21

## Contacts



### Rice County Board of Commissioners

(as of January 1, 2021)

#### District 1

Jim Purfeerst  
507-323-5091  
jpurfeerst@co.rice.mn.us

#### District 2

Galen Malecha  
507-645-6041  
gmalecha@co.rice.mn.us

#### District 3

David Miller  
507-334-4763  
dmiller@co.rice.mn.us

#### District 4

Steve Underdahl  
507-332-8222  
sunderdahl@co.rice.mn.us

#### District 5

Jeff Docken  
507-339-9711  
jdocken@co.rice.mn.us

## Phone Numbers

General Information 507-332-6100

### Toll-Free Numbers (do not dial "1" or area code)

From Northfield 645-9576  
From Lonsdale 744-5185

## Rice County Standing Meetings

### Board of Commissioners

Meets the first and third Tuesdays of each month as a Committee of the Whole/Work Session, 8:30 a.m., Commissioners' Room, Rice County Government Services Building.

Meets the second and fourth Tuesdays of each month as a Regular Board, 8:30 a.m., Commissioners' Room, Rice County Government Services Building.

### Board of Adjustment

Meets the first Thursday of the month; 6:30 p.m., Commissioners' Room, Rice County Government Services Building.

### Planning Commission

Meets the first Thursday of the month, immediately following the Board of Adjustment meeting, Commissioners' Room, Rice County Government Services Building.

### Community Corrections Advisory Board

Meets the third Thursday of March, June, September and December, 3:30 p.m., Rice County Government Services Building.

### Rice County Emergency Preparedness Advisory Council

Meets quarterly, 7:00-9:00 p.m.; call 507-332-6119 for meeting date and location.

### Mental Health Advisory Council

Meets the fourth Wednesday of January, February, March, April, September and October, 12:00 p.m. (noon), Friendship House, located at 310 First Avenue NW, #1, Faribault.

## Rice County Departments

### Administrator

507-332-6121

Sara Folsted  
sfolsted@co.rice.mn.us

### Assessor

507-332-6159

Joshua Schoen  
jschoen@co.rice.mn.us

### Attorney

507-332-6103

John Fossum  
jfossum@co.rice.mn.us

### Chief Financial Officer

507-332-6122

Paula O'Connell  
poconnell@co.rice.mn.us

### Community Corrections Director

507-332-6106

Rick Gieseke  
rgieseke@co.rice.mn.us

### Court Administrator

507-497-7148

Lisa Kuhlman  
lisa.kuhlman@courts.state.mn.us

### Economic Development Coordinator

507-332-6091

Kathy Feldbrugge  
kfeldbrugge@co.rice.mn.us

### Environmental Services Director

507-332-6113

Julie Runkel  
jrunkel@co.rice.mn.us

### Extension Regional Director

507-332-6109

Lisa Dierks  
dierksl@umn.edu

### Highway Engineer

507-332-6110

Dennis Luebbe  
dluebbe@co.rice.mn.us

### Housing Director

507-333-3787

Joy Watson  
jwatson@co.rice.mn.us

### Human Resource Manager

507-332-6100

Carol Kritzer  
ckritzer@co.rice.mn.us

### Information Technology Manager

507-333-3777

Allan Klug  
aklug@co.rice.mn.us

### Parks/Facilities Director

507-332-6105

Matthew Verdick  
mverdick@co.rice.mn.us

### Property Tax & Elections Director

507-332-6133

Denise Anderson  
danderson@co.rice.mn.us

### Public Health & CHS Director

507-332-6111

Deb Purfeerst  
dpurfeerst@co.rice.mn.us

### Recorder

507-332-6114

Judy VanErp  
jvanerp@co.rice.mn.us

### Sheriff

507-332-6010

Troy Dunn  
tdunn@co.rice.mn.us

### Social Services Director

507-332-6115

Mark Shaw  
mshaw@co.rice.mn.us

### Veterans' Services Officer

507-332-6117

Tracy McBroom  
trmcroom@co.rice.mn.us