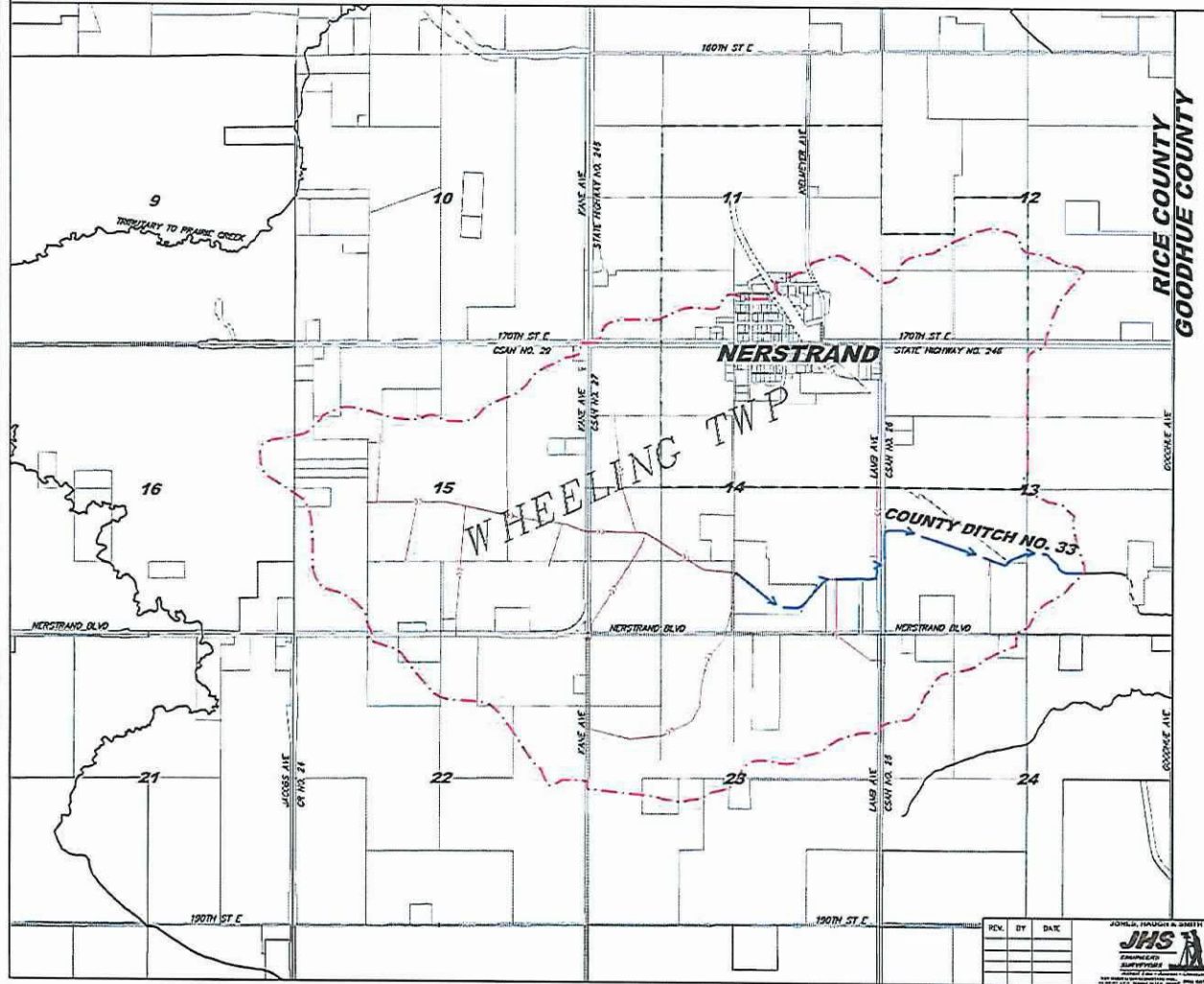


COUNTY DITCH NO. 33

REDETERMINATION OF BENEFITS & DAMAGES

RICE COUNTY, MINNESOTA



INDEX TO SHEETS

SHEET	SUBJECT
1	TITLE SHEET
2-6	WATERSHED MAP

LEGEND

APPROXIMATE EXISTING WATERWASH	---
APPROXIMATE EXISTING WATERWASH	---
APPROXIMATE ORIGINAL WATERWASH	---
OPEN DITCH (PROPOSED)	---
LEGAL DITCH (PROPOSED)	---
PRIVATE OPEN DITCH	---
T&E DITCH (PROPOSED)	---
LEGAL T&E DITCH (PROPOSED)	---
PRIVATE T&E	---
NATURAL STREAM	---
NATURAL STREAM	---
GAZ LINE	---
OVERHEAD ELECTRIC	---
UNDERGROUND TELEPHONE	---
CITY LIMITS	---
RAIL LINE	---
T&E MATT	---
OVERHEAD TELEPHONE	---
UNDERGROUND TELEPHONE	---
UNDERGROUND ELECTRIC	---
LOOSE POLE	---
POWER POLE	---

ABBREVIATIONS

JD = JUDICIAL DISTRICT
CO = COUNTY BOUNDARY
JD = JOHN COUNTY BOUNDARY
ND = NEENAH-ORVILLE BOUNDARY
LA = LATERAL
RE = RE-BRANCH
PO = PRIVATE OPEN DITCH
LA = LATERAL
RE = RE-BRANCH
DL = DITCH

No responsibility is accepted for the locations of utilities shown hereon. Verification of actual locations should be requested prior to the commencement of construction by the issuing of any other action relying on the actual locations.

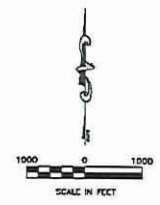
Locations of all utilities shown are approximate.
COPPER STATE ONE-CALL: 1-800-252-1166

The subsurface utility information in this plan is Utility Quality Level D. This Utility Quality Level was determined according to the guidelines of C/ASCE 38-22, entitled "Standard Guidelines for the collection and depiction of existing subsurface utility data."

COPYRIGHT
by JENSEN, HAUGEN & SMITH INC.
This drawing and format are protected by
Copyright and all rights are reserved. The use
of this drawing and format is strictly prohibited
without the written consent and permission of
Jensen, Haugen & Smith Inc.

I hereby certify that this plan, specification, or report was prepared by me or under my direct supervision and that I am a duly Licensed Professional Engineer under the laws of the State of Minnesota.

Steven J. Franke
Lic. No. 43895 Date:



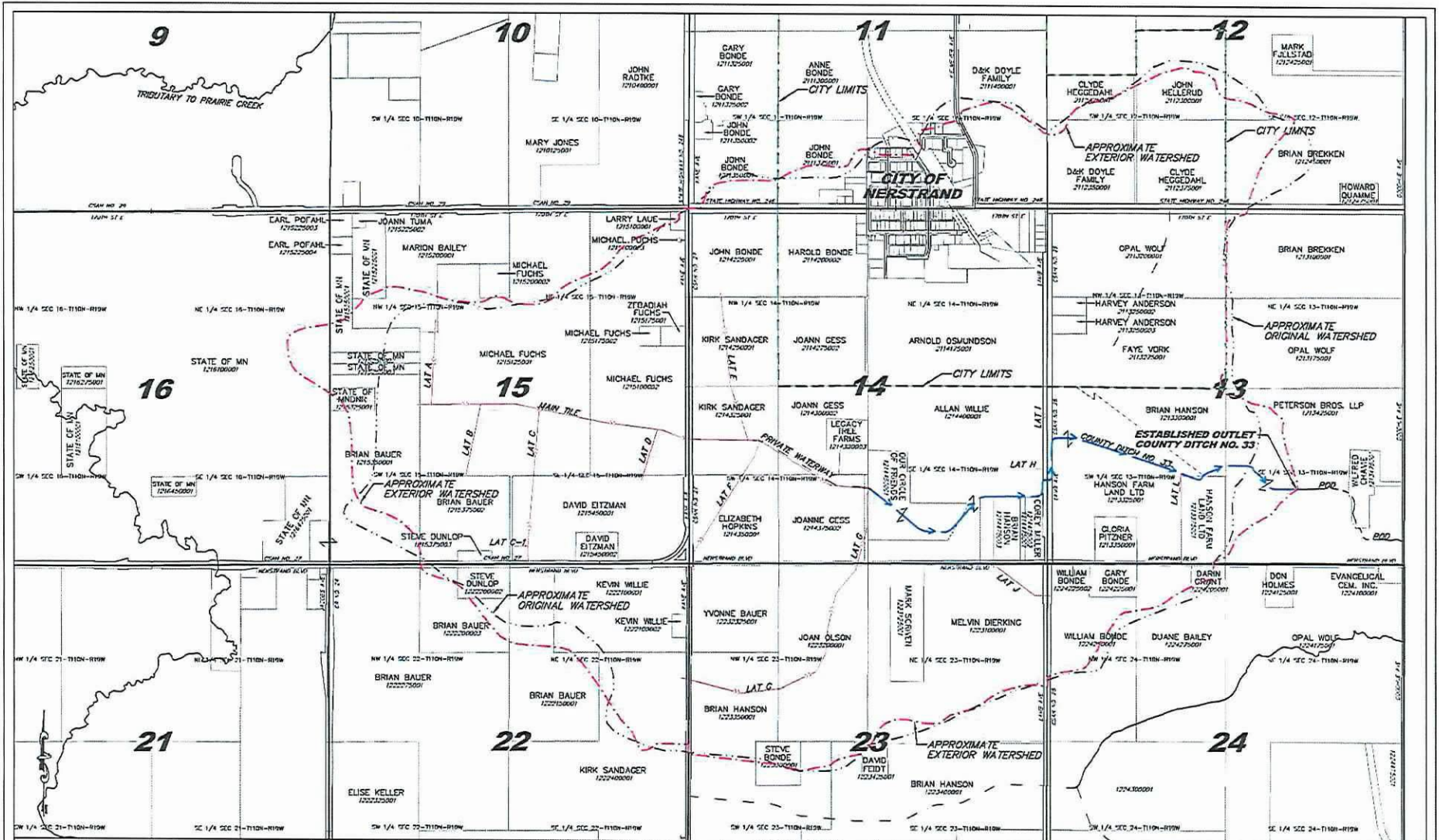
REV.	BY	DATE



DESIGNED	SJP
DRAWN	SJP
CHECKED	SJP
DATE	June 28, 2011
FILE NO.	13-142240

EXHIBIT A
RICE COUNTY, MINNESOTA
COUNTY DITCH NO. 33
REDETERMINATION OF BENEFITS & DAMAGES
TITLE SHEET

SHEET
1
of
2



COPYRIGHT
 This drawing and format are protected by copyright and all rights are reserved. The use of this drawing and format is strictly prohibited without the written consent and permission of JHS, Haugh & Smith Inc.

No responsibility is accepted for the locations of utilities shown herein. Verification of actual locations should be requested prior to the commencement of construction or the taking of any other action relying on the actual locations.
 Gopher State One-Call: 1-800-252-1156

REV	BY	DATE



DESIGNED: JSP
 DRAWN: JSP
 CHECKED: JSP
 DATE: June 28, 2017
 FILE NO: 17-182101

I hereby certify that this plan, specification, or report was prepared by me or under my direct supervision and that I am a duly Licensed Professional Engineer under the name of the State of Minnesota.
 Steven J. Pershagen
 Lic. No. 43961

RICE COUNTY, MINNESOTA
COUNTY DITCH NO. 33
WATERSHED MAP
 REDEMPTION OF BENEFITS & DAMAGES
 WHEELING TOWNSHIP, RICE COUNTY

SHEET
 2
 of
 2